

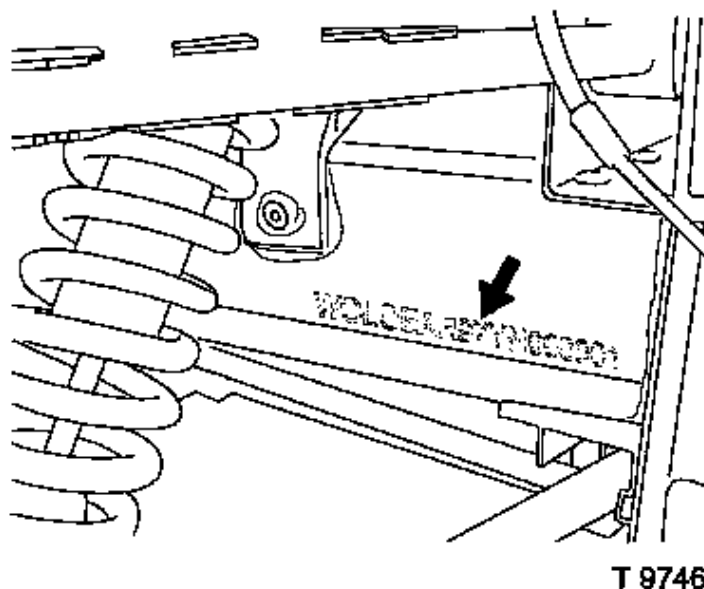
## Vehicle Identification Number

The numbers and codes that are specific to the vehicle are described in the paragraphs below.

The vehicle identification number (VIN) is stamped into the chassis frame and printed on a label, which is located on the body. The VIN is 17 characters long and the functions of the characters are listed in the table.

Character position	Function
1 to 3	World manufacturer's code; WOL = Opel
4	Reserve specials; 0
5	Model code; E = Speedster/VX 220
6	Vehicle type; A = Speedster/VX 220
7 to 9	Body style; R97
10	Model year; Y = 2000
11	Manufacturing plant; N = Norwich
12 to 17	Serial number

The vehicle identification number (arrowed) is stamped into the chassis frame adjacent to the right, front wheelarch.



The vehicle identification label is bonded to the body in the front compartment.

A vehicle identification plate at the windscreen is installed on Vauxhall models and is attached to the upper part of the instrument panel so that the VIN can be read through the bottom edge of the windscreen. The plate carries the vehicle identification number as a bar code and as numbers and letters.